



PLAC UNII

OFFICE AND RETAIL
SPACES

All needs - one place

Retail and service passage (11 000 sqm)

Office buildings (46 500 sqm)

BUSINESS and service complex

- Prime location
- Convenient access by public transport
- 3 entrances from the main streets
- 42 stores and service outlets
- 500 parking spaces for the whole complex

FACILITIES



Underground parking,
500 parking spaces



Disabled-friendly
center



Free Wi-Fi
available at any location



Parcel and collector
machine



Parking space for bicycles
and repair station



Food-court



Notary



Dentist



Gym



Veturilo station

LOCATIONS

Metro station

Tram stop

Bus stop

Veturilo station

Government building

Restaurant / Café

Sport

Post Office

Hotel



BUILDING TECHNICAL SPECIFICATION

- Spacious lobby with 24-hours reception and security
- Integrated building management system (BMS)
- CCTV system
- Modern, energy-efficient high-speed elevator system
- Access control system integrated with elevator system and parking
- 24-hour building fireman
- Energy metering system allowing for constant monitoring of media consumption
- Fire protection system based on state-of-the-art solutions
- LED lighting in common areas





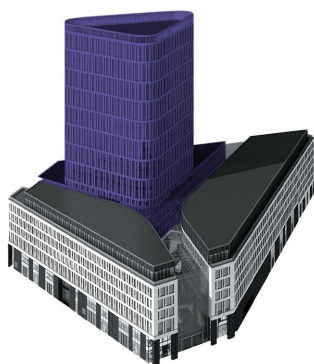
PLAC UNII IS MORE THAN JUST AN OFFICE IN THE TRADITIONAL SENSE

SUSTAINABLE DEVELOPMENT

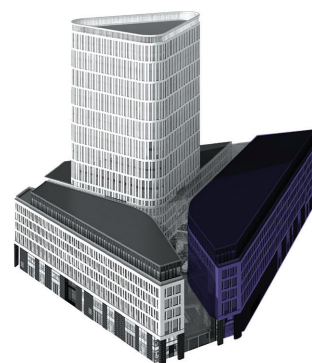
- BREEAM In-Use Certificate
- TERS 2g system - lift brake energy regeneration and control systems
- BMS software Energy monitoring
- Optimised energy consumption (The reduction in electricity consumption 2023 compared to 2018 - 51,49 %)
- Terraces with bird baitats
- Electric scooter charging station

AVAILABLE AREAS FOR RENT:

BUILDING A



BUILDING B



Floor	Sur. (m ²)	Availability
Level 2	1357,50 m ²	available now
Level 3	426,77 m ²	available now

Floor	Sur. (m ²)	Availability
Level 2	542,21 m ²	available now
Level 3	509,18 m ²	from 12.2023
Level 4	2477,98 m ²	from 12.2023
Level 5	1550,07 m ²	available now

- Minimum rental period: 5 years
- Base Rent: 17-22 EUR
- Service charge: 25,5 zł
- Parking ratio: 1:135
- Rent for a parking space: 220 EUR